

ON THE DISTRIBUTION OF *Tipulodes rubriceps* Dognin, 1912 (Lepidoptera, Erebidae) IN BRAZIL AND ITS REDISCOVERY IN PARÁ

SOBRE A DISTRIBUIÇÃO DE *Tipulodes rubriceps* Dognin, 1912 (Lepidoptera, Erebidae) NO BRASIL E SUA REDESCOBERTA NO PARÁ

SOBRE LA DISTRIBUCIÓN DE *Tipulodes rubriceps* Dognin, 1912 (Lepidoptera, Erebidae) EN BRASIL Y SU REDESCUBRIMIENTO EN PARÁ

José Augusto **Teston**^{1*}, Danubia Marcela Pereira **Valente**²

¹Doutor em Biociências (Zoologia) pela Pontifícia Universidade Católica do Rio Grande do Sul (PUCRS), Professor Titular do Programa de Ciências Naturais (PCNAT) do Instituto de Ciências da Educação (ICED) da Universidade Federal do Oeste do Pará (UFOPA)

²Mestre em Ciências Ambientais, pela Universidade Federal do Oeste do Pará. Doutoranda do PPGBionorte/ UFOPA.

*Autor para correspondência E-mail: jateston@gmail.com

Recebido: 03.08.2023 Aceito: 10.10.2023

Tipulodes rubriceps Dognin, 1912 was described from Colombia. The original description is based on a male, collected by A. H. Fasl in Medina, in the department of Cundinamarca, near the Gazamumo River, at an altitude of 500 m (Dognin, 1912). The holotype is in the U.S. National Entomological Collection (USNM) at the National Museum of Natural History (NMNH), Washington, D.C., USA (Przybyłowicz, 2001).

After the description, *T. rubriceps* is cited for the same place in the catalogs of Hampson (1914) and Draudt (1915) and in the studies of Rabello (1955) and Machado Filho and Rego Barros (1969).

Przybyłowicz (2001) redescribes the species based on the holotype, including description and illustrations of the male (holotype) and female genitalia, this being from a specimen from Villavicencio in Colombia that is deposited at the Museum National d'Histoire Naturelle em Paris. In this same publication, he presents a list of distribution locations for the species in Bolivia, Brazil, Colombia, Ecuador and Peru.

For Brazil, Przybyłowicz (2001) lists two locations: "Sao Antonio, near Belém in Pará", with a male specimen in the entomological collection of the Museum National d'Histoire Naturelle in Paris and another, from Mato Grosso, with a male specimen in the entomological collection of the Naturhistoriska Riksmuseet in Stockholm. In the species distribution figure, he does not mark these two localities, apparently intentionally,

because in reporting the distribution Przybyłowicz (2001), suggests that the species may have a wider distribution than just the Andean region, however they cast doubt on the location of the specimens found in Brazil.

In Przybyłowicz (2003), there is the addition of another record for Brazil, for “Cuyaba in Mato Grosso” after examining a female specimen from the entomological collection of the British Museum of Natural History in London. So, it is clear to the author that the species has a wider distribution than just in the Andean region, advancing further southeast to Brazil. In this same publication, the author questions the origin of the specimen from the vicinity of Belém, Pará, stating that it would be difficult to explain. Ferro and Diniz (2010) reports the occurrence of the species in Goiás, GO. Based on this information from Przybyłowicz (2003), Teston et al. (2019) do not include the species in their list of Ctenuchina occurring in the Brazilian Amazon, given the uncertainty of the location.

This communication is based on material from the collections of the Museum National d'Histoire Naturelle (Paris, France) and the Laboratório de Estudos de Lepidópteros Neotropicais, Universidade Federal do Oeste do Pará (Santarém, Pará, Brazil).

After reviewing the specimen photos and their labels from the Museum National d'Histoire Naturelle (Env. de Belém; Sao Antonio; 27-IX-1975 / Moyen, XINGU (Brésil); Mission M. Boulard, P. Jauffret et P. Pompanon; Muséum PARIS / *Tipulodes rubriceps* Dogn. ♂, det. Ł. Przybyłowicz, 2000) and consult Boulard (1979) for details on the expedition from which the specimen was captured (map and site description), it is clear that the correct location of this specimen is Sa[nto] Antônio [do Tauá]. This region is located in the northeast of Pará, with geographic positioning obtained from the Geo Loc tool of the “Species Link date & tools” (<http://splink.cria.org.br/geoloc>): 01° 09' 07" south latitude and 48° 07' 45" west longitude.

The specimen from the collection of the Laboratório de Estudos de Lepidópteros Neotropicais, is a male, from Belterra, Pará (02°51'23.3" south latitude and 54°57'31" west longitude), was collected on 29-VI-2019 by Valente, D.M.P. in an understory area of the Tapajós National Forest (Figure 1). Identified by photos and description according to Przybyłowicz (2001) and, key (Przybyłowicz, 2003).

Therefore, its occurrence in the Brazilian Amazon is confirmed, more precisely in the localities of Sa[nto] Antônio [do Tauá] and of Belterra, in the State of Pará, and the distribution area of the species is expanded, increasing approximately 1,800 km to the

north, the distance from Cu[i]ab[á] and Goiás, until then, the only confirmed records for Brazil (Przybyłowicz, 2003; Ferro and Diniz, 2010) (Figure 2).

This communication contributes to the knowledge of macrolepidoptera biogeography and diversity in the Brazilian Amazon.

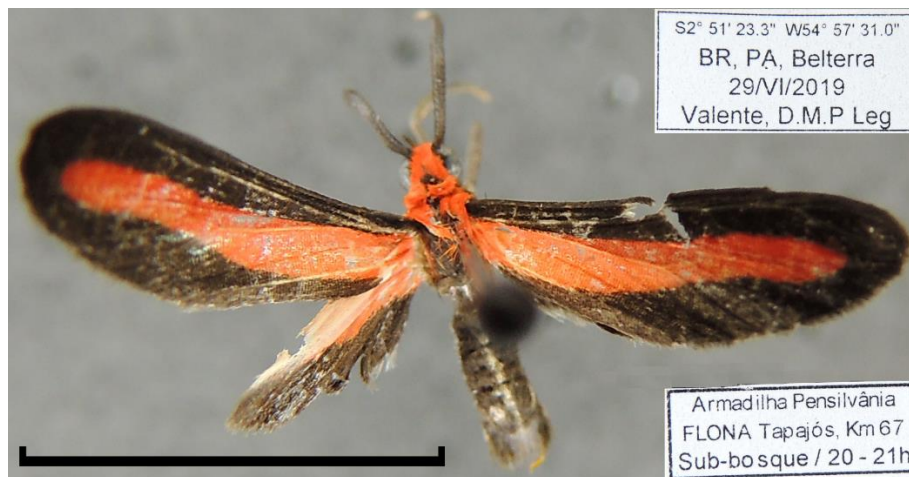


Figure 1. Male of *Tipulodes rubriceps* Dognin, 1912 collected with light trap in Belterra, PA. Scale 10 mm.

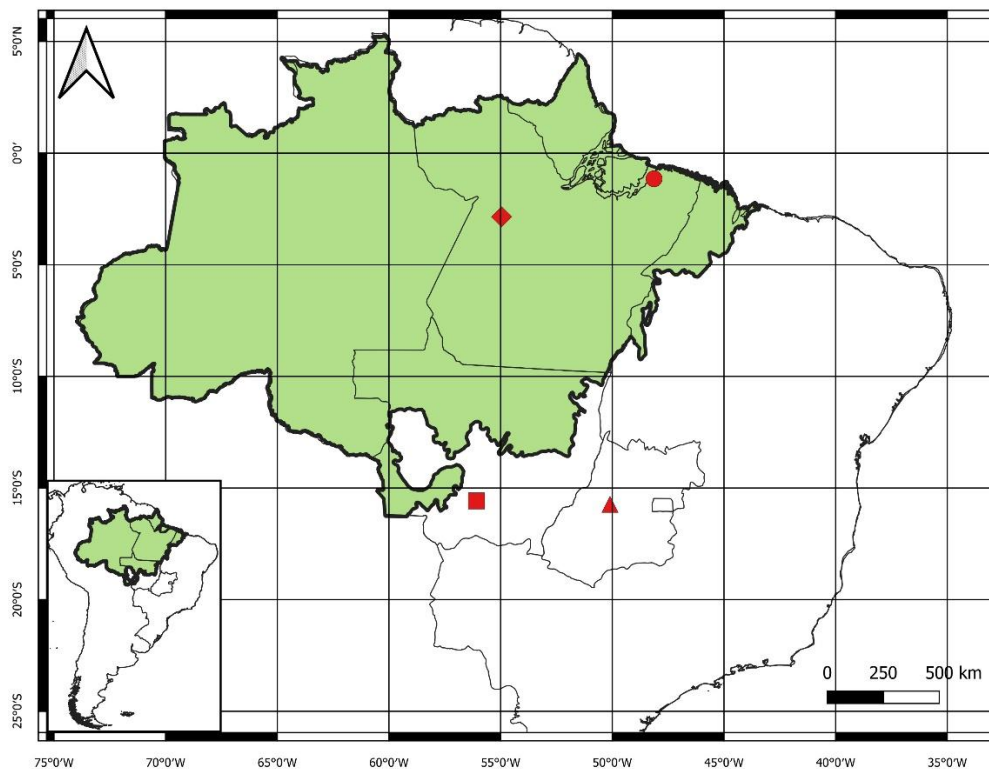


Figure 2. Map of distribution of *Tipulodes rubriceps* Dognin, 1912, in the municipalities of Cuiabá (red square) in the State of Mato Grosso; Goiás (red triangle) in the State of Goiás; Belterra (red diamond) and Santo Antônio do Tauá (red circle) in the State of Pará.

ACKNOWLEDGEMENTS

To Benoît Vincent, French entomologist, for contacting the head of the Heterocera Collections of Museum National d'Histoire Naturelle and sending photos of the specimen and its label and, Dr. Tobias Malm, Curator of Lepidoptera collection of Swedish Museum of Natural History for sending photos of the specimen and its label. Rede Nacional de Pesquisa e Conservação de Lepidópteros - RedeLep (SISBIOTA – Brasil/CNPq 563332/2010-7) for their logistic support and materials.

REFERENCES

- Boulard, M. Missions entomologiques en Guyane et au Brésil. Introduction, notes de chasses et principaux résultats. Bulletin de la Société entomologique de France, 84(5-6), 101-117, 1979.
- Dognin, P. Hétérocères nouveaux de l'Amérique du Sud. Fascicule V. Rennes: Imprimerie Oberthür, 1912.
- Draudt, M. Familie: Syntomidae. In: Seitz, A. (Ed.). Die Gross-Schmetterlinge der Erde. II. Abteilung: Die Gross-Schmetterlinge des Amerikanischen Faunengebietes. 6. Band. Die Amerikanischen Spinner und Schwärmer. Stuttgart: Alfred Kernen, 1914-1919, p. 33-230.
- Ferro, V. G.; Diniz, I. R. Riqueza e composição das mariposas Arctiidae (Lepidoptera) no Cerrado. In: Diniz, I. R.; Marinho-Filho, J.; Machado, R. B.; Cavalcanti, R. (Eds.). Cerrado: conhecimento quantitativo como subsídio para as ações de conservação. Brasília: Editora Thesaurus, 2010, p. 255-313.
- Hampson, G. F. Catalogue of the Lepidoptera Phalaenae in the British Museum. Supplement. Volume I. Catalogue of the Amatidae and Arctiidae (Nolinae and Lithosianae) in the collection of the British Museum. London: Taylor & Francis, 1914.
- Machado Filho, J. P.; Rego Barros, A. R. do. Estudos dos Ctenuchidae Neotropicais – II. Revisão do gênero *Tipulodes* Boisd., 1832 (Lepidoptera – Heterocera). Boletim do Museu Nacional, 266, 1-7, 1969.

Przybyłowicz, Ł. Redescription of the genus *Tipulodes* Boisduval, 1832 (Lepidoptera: Arctiidae). *Acta Zoologica Cracoviensia*, 44(4), 423-430, 2001.

Przybyłowicz, Ł. *Tipulodes annae* sp. n. (Lepidoptera: Arctiidae) from Colombia with distributional notes on the genus. *Acta Zoologica Cracoviensia*, 46(4), 365-368, 2003.

Rabello, E. X. Contribuição para o conhecimento dos Ctenuchidae. VI. Gênero *Tipulodes* Boisduval, 1832 (Lepidoptera). *Arquivos do Museu Nacional*, 42(2), 469-476, 1955.

Teston, J. A., Abreu, D. S.; Ferro, V. G. Arctiini Leach, [1815] (Lepidoptera, Erebidae, Arctiinae) of the Brazilian Amazon. III – Subtribe Ctenuchina Kirby, 1837. *Biota Neotropica*, 19 (2), e20180673, 2019. Available from: <https://www.scielo.br/j/bn/a/q4P6cQRGKDtLBpgCrQmkPYv/?lang=en>. Accessed on: 03 Aug 2023.